

Riyadh Advanced Traffic Control System

A step towards Saudi Arabia's Vision 2030

*TRANS*CORE®

Presentation for ITSNY 2023

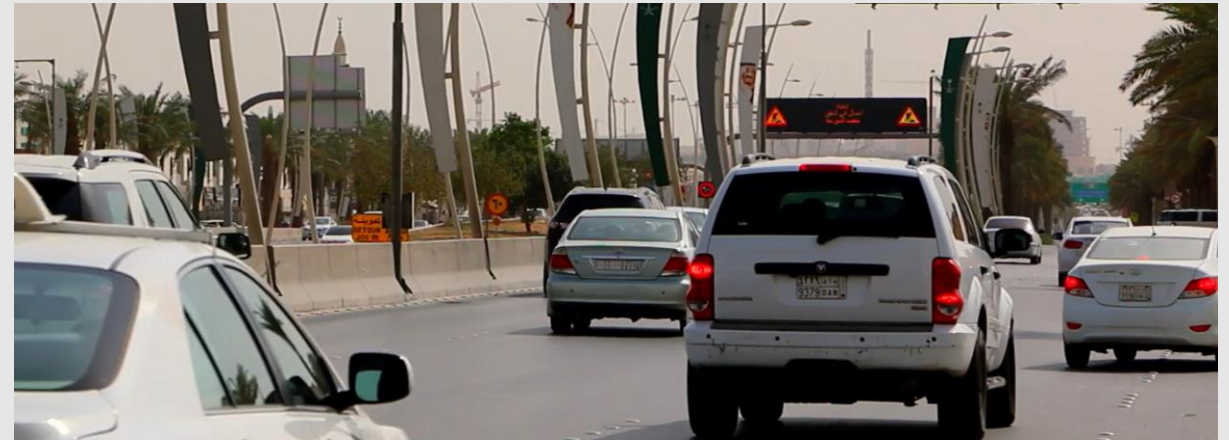
Raymund Royandoyan, Sr. Mgr.

A nighttime cityscape of Riyadh, featuring a prominent cable-stayed bridge in the foreground and several modern high-rise buildings in the background. The scene is illuminated by city lights, and the water in the foreground reflects the lights. The image is overlaid with a blue gradient and geometric shapes.

Insert Riyadh Smart Traffic Signals video with Audio

Riyadh Advanced Traffic Control System Project

- In February 2014 TransCore was awarded \$100M contract
- Design, Build, Operate and Maintain 350 intersections in Riyadh
- Modernized intersections
- Communications infrastructure
- Central Hardware
- TransSuite and ACDSS
- 5-year Operations and Maintenance
- Project completed in September 2022



Riyadh Advanced Traffic Control System Project

- Modernized intersections
 - Civil works
 - New Traffic Signal Poles, signal heads and Pedestrian pushbuttons
 - New intersection wiring
 - New traffic controllers and cabinets
 - Uninterruptible Power Supplies
- Communications infrastructure
 - Private Microwave Network
 - 3G/4G Telecom Provider
 - Telecom Microwave Network
 - Fiber Optic Network



Riyadh Advanced Traffic Control System Project

- 5-year Operations and Maintenance
 - 24/7/365 Operations Personnel
 - 24/7/365 Maintenance Personnel
- Traffic Management
 - Coordinate incident response
 - Special Plans
 - Facilitate VIP Movement
- One-hour response plans
 - Power Failures
 - Equipment failures
 - Equipment Damage due to Accidents
- Preventive Maintenance



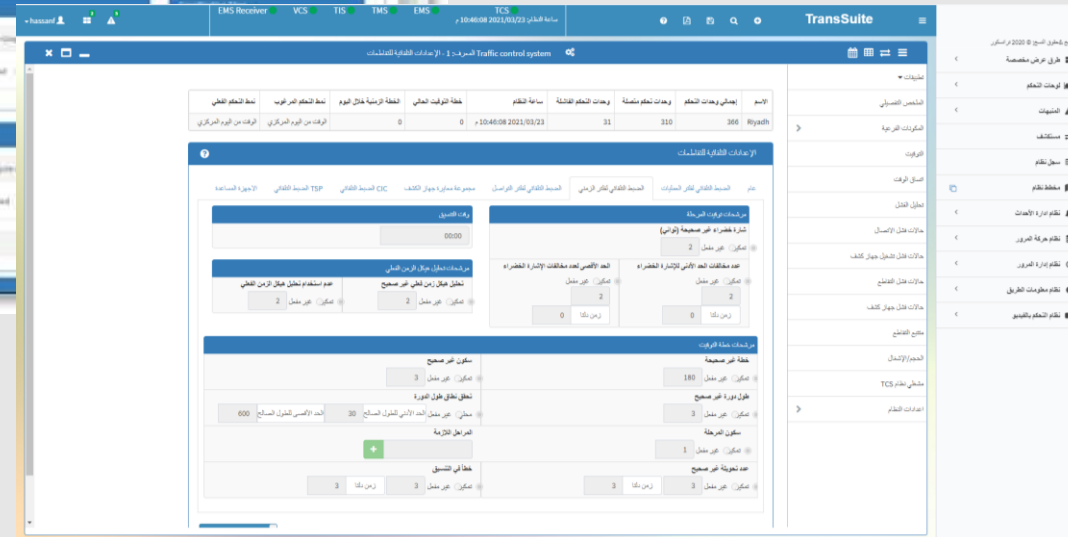
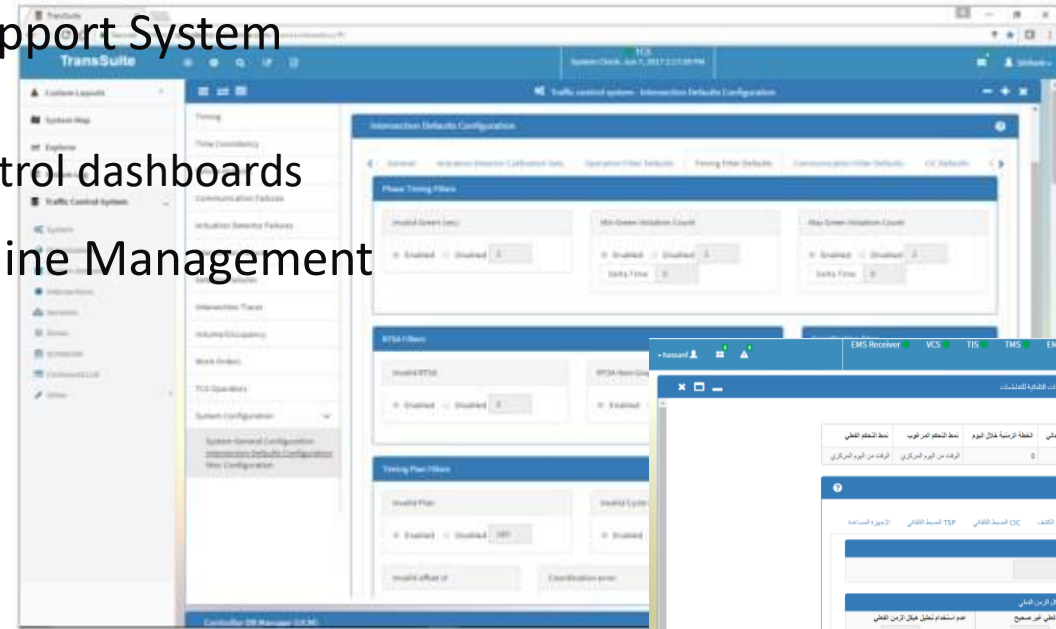
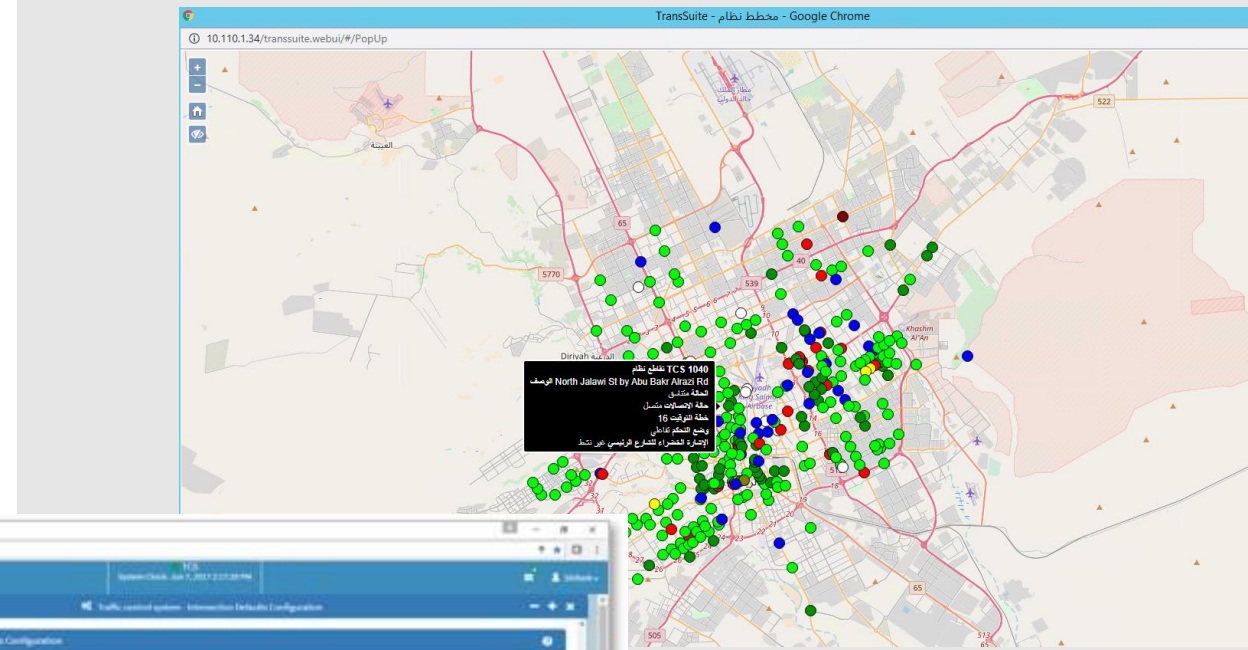
Riyadh Advanced Traffic Control System Project

- Traffic Control Center
 - Located in King Abdulaziz Public Transportation Center
 - Co-located with METRO and BRT Operations



Riyadh Advanced Traffic Control System Project

- TransSuite Traffic Management Modules
 - Browser-based
 - English and Arabic
- Adaptive Control Decision Support System (ACDSS)
 - Provides various adaptive control dashboards
- TransCore's Maintenance Online Management System (MOMS)

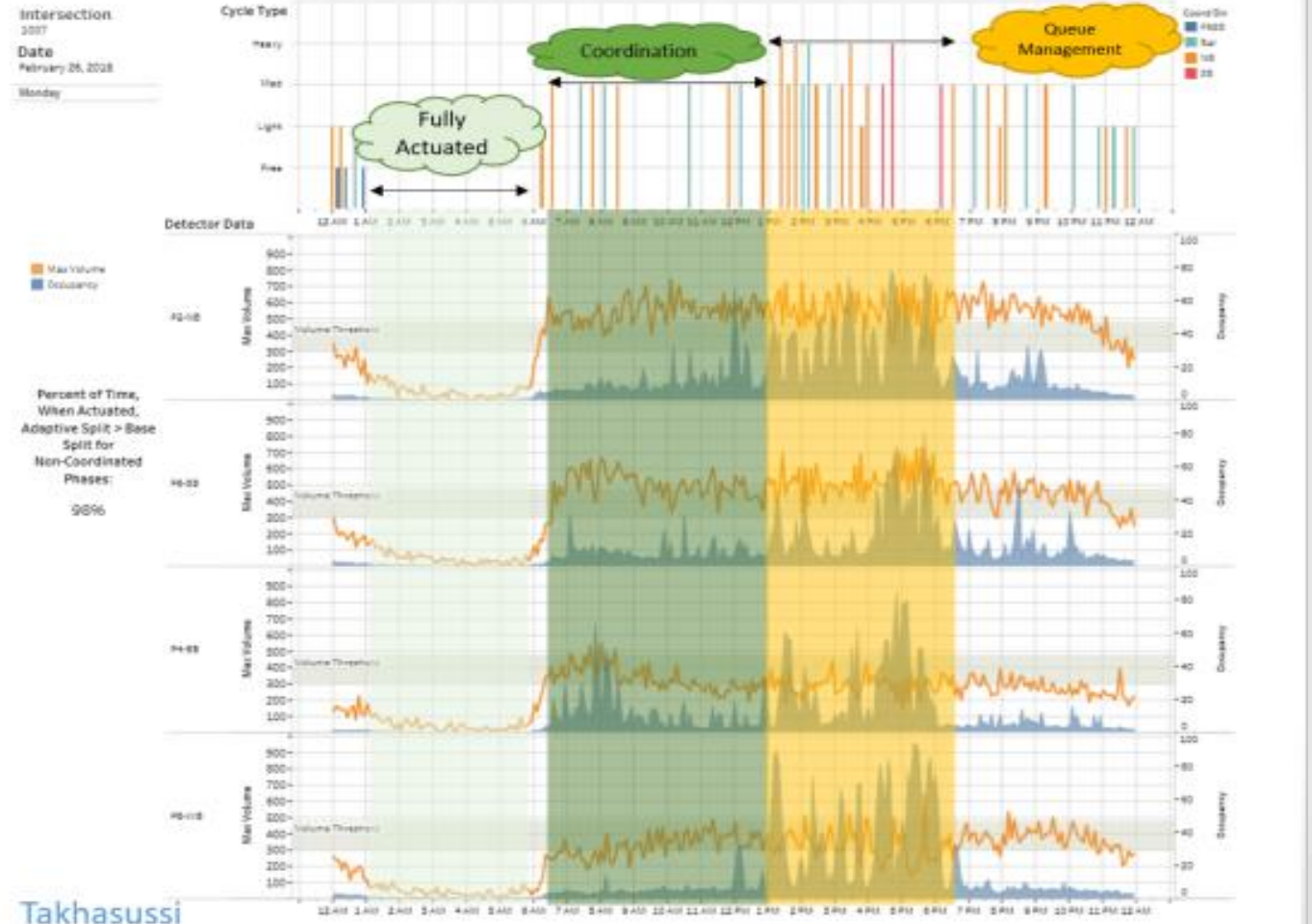


Adaptive Control - ACDSS



Traffic Adaptive - ACDSS

- Allows adaptive control to support a very dynamic changes in traffic conditions
- Provides various adaptive control modes
 - Adaptive isolated mode
 - Adaptive coordinated
 - Queue Management
 - Corridor Management
 - Area wide Control



An aerial photograph of a city street scene. A large, curved, modern building with a metallic facade is the central focus. To its left is a multi-lane highway filled with cars. To its right is a parking lot with many vehicles. The entire image is overlaid with a semi-transparent blue diagonal band. The text 'Operational Improvements and Benefits' is written in white, bold, sans-serif font across the middle of the blue band.

Operational Improvements and Benefits

Operational Improvements and Benefits

Progressive Timeline						
Corridor	Average Travel Time				Delay Reduction in (%)	
	Before (Pre ATCS)	With ATCS	With ATCS + Adaptive	With ATCS + Adaptive Early Yield Strategy	Overall (%)	With ATCS + Adaptive
	<p>King Khalid</p> <p>Was 9.5 mins</p>	<p>↓</p> <p>Down to 8.5 mins</p> <p>11%</p>	<p>↓</p> <p>Down to 7.5 mins</p> <p>21%</p>	<p>↓</p> <p>Down to 7.0 mins</p> <p>26%</p>	<p>↓</p> <p>Up to 26%</p>	<p>↓</p> <p>Up to 26%</p>



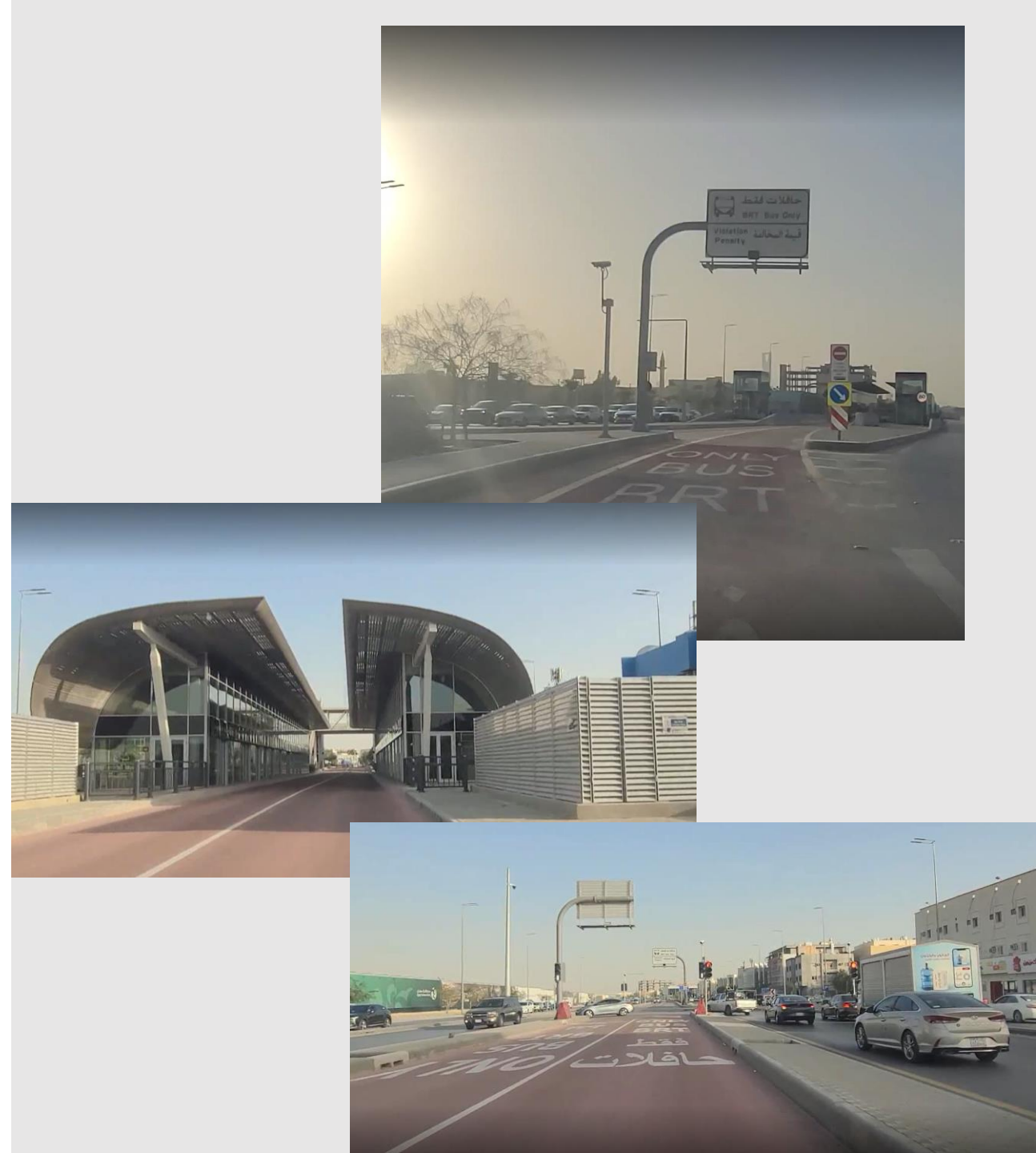
Project Challenges

A nighttime photograph of a city skyline reflected in water. A prominent cable-stayed bridge is on the left, and several tall skyscrapers are visible in the background. The scene is illuminated by city lights, creating a vibrant blue and white color palette. The text 'Program Status' is overlaid in white, centered horizontally and slightly above the middle vertically.

Program Status

Program Status

- Integrated with third party application to provide traffic data from TransSuite
- Centralized Transit Signal Priority (CTSP) recently deployed for Riyadh's Bus Rapid Transit Routes
- Integration into TransSuite of additional 80 intersections
- Upcoming integration into TransSuite of additional 300 intersections
- Initial discussion with Red Crescent for implementation of centralized Emergency Vehicle Preemption (CEVP)



Thank You

Presentation for ITSNY 2023

Raymund Royandoyan, Sr. Mgr.

*TRANS*CORE®